



40S Series

Stainless Steel High Pressure Filter



ENGINEERING YOUR SUCCESS.

40S Series

Parker's comprehensive asset health management approach extends well beyond traditional methods and brings focus to long term system performance and reliability.

The 40S Series is another example of this approach, a high pressure filter constructed in all 316 stainless steel which makes it ideally suited for water and caustic applications or where harsh environmental conditions exist. The filter offers allowable operating pressure of 3000 PSI/138 Bar and capable of flows up to 150 GPM/570 LPM depending on viscosity.

Typical Markets-Applications

- **Mining Dust Control - Water Spray**
- **Oil & Gas Offshore BOP Fluids**
- **Power Gen Wet Compression**
- **Marine Hydraulic Power Unit**
- **Food & Beverage Caustic Wash Down**
- **Pulp & Paper Caustic Environment**

Features

- Bowl-up configuration for ease of element maintenance
- 316 stainless steel construction
- Large porting for increase flow capacity
- Stainless steel visual and electrical indicator options
- Integral mounting holes for installation flexibility
- High fatigue pressure rating for demanding applications
- High efficient microglass elements standard

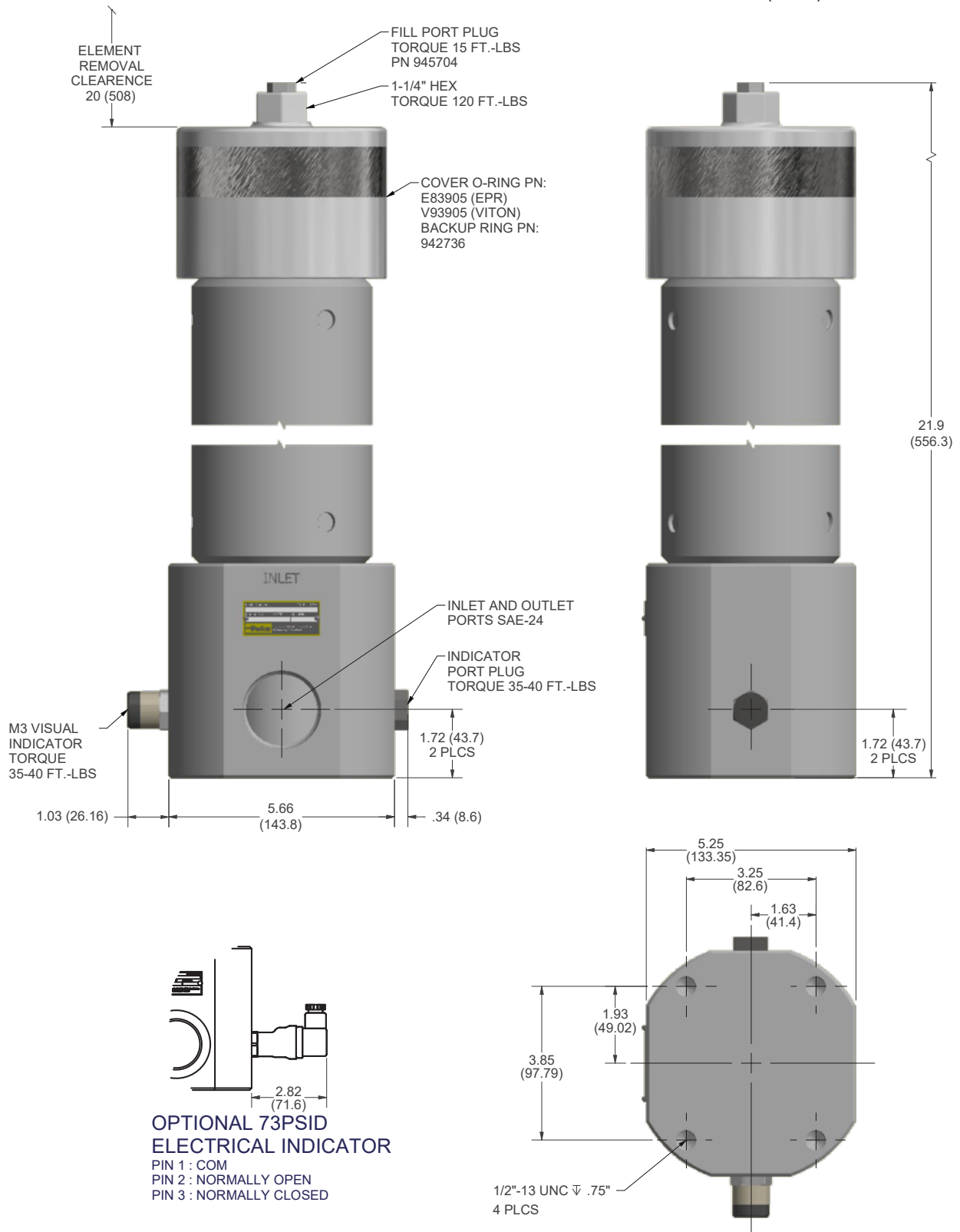


40S Series

Specifications

Dimensions

in. (mm)



40S Series

Specifications

Pressure Ratings:

Maximum Allowable Operating Pressure (MAOP): 3,000 psi (206 bar)

Rated Fatigue Pressure: 3,000 psi (206 bar)

Design Safety Factor: 3:1

Operating Temperatures:

EPR: -40°F (-40°C) to 225°F (107°C)

Fluorocarbon: -15°F (-26°C) to 275°F (135°C)

Element Collapse Rating:

High Collapse: 2,000 psi (138 bar)

Element Materials:

End Caps: 316 Stainless Steel

Core: 316 Stainless Steel

Housing Materials:

Head: 316 Stainless Steel

Bowl: 316 Stainless Steel

Cover: 316 Stainless Steel

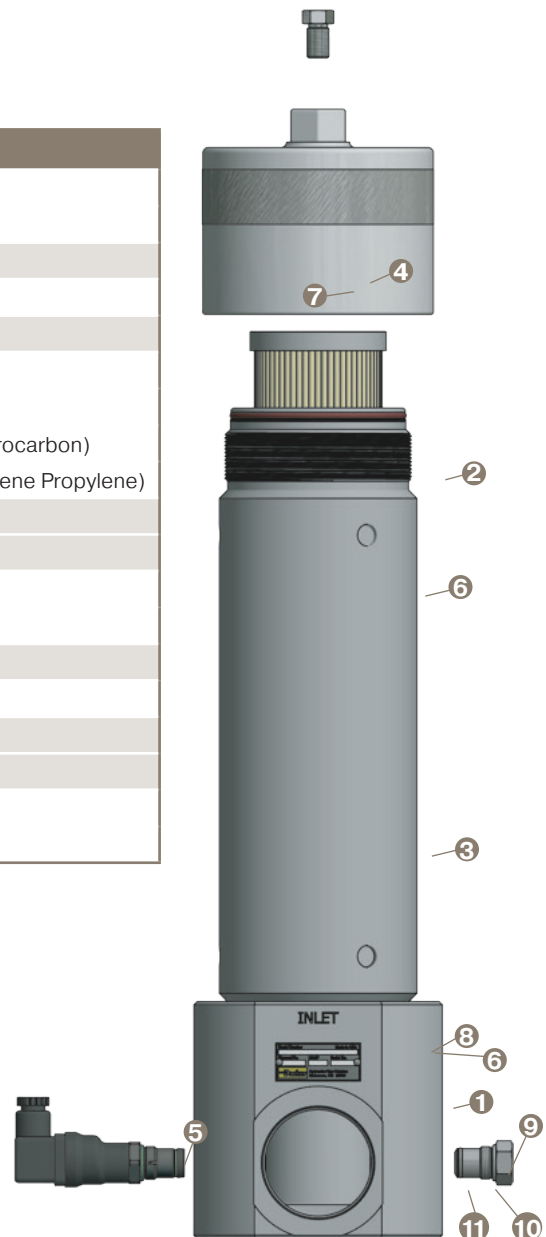
Indicator: 300 Series Stainless Steel with Thermoplastic connectors

Weight (approximate): 65 lbs (29.5 kg)

Parts List

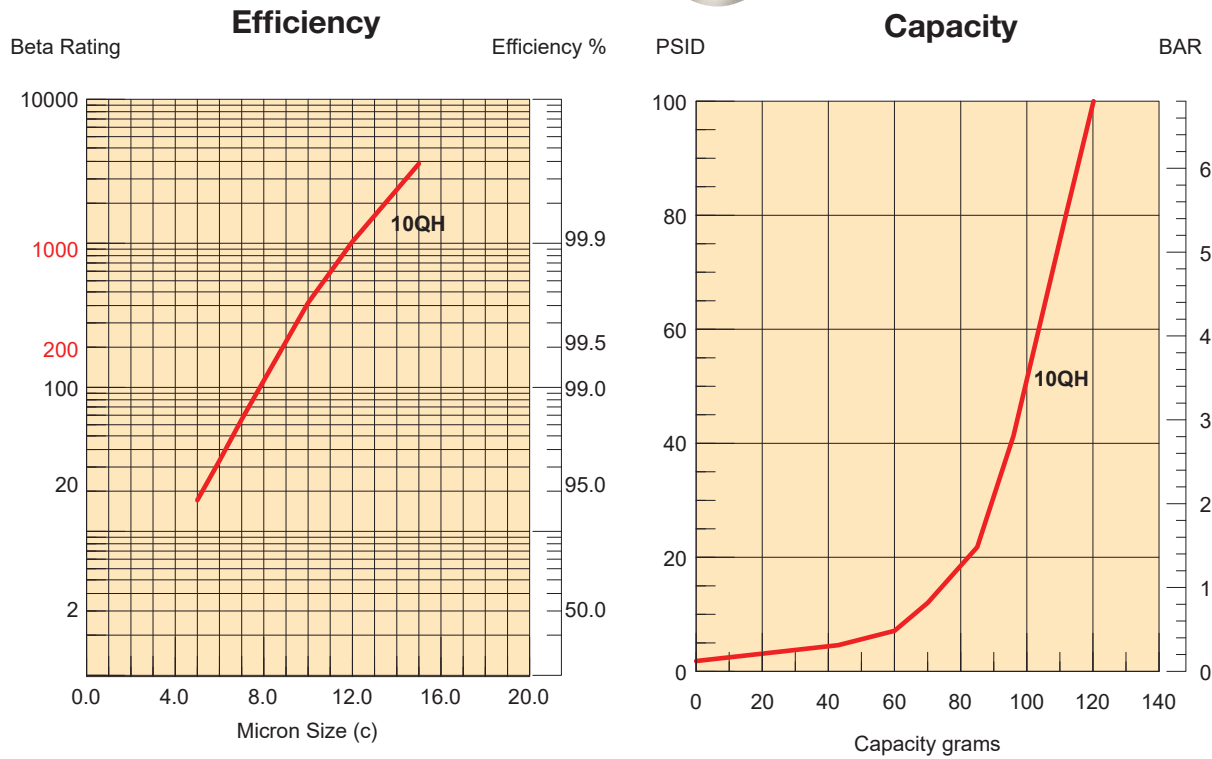
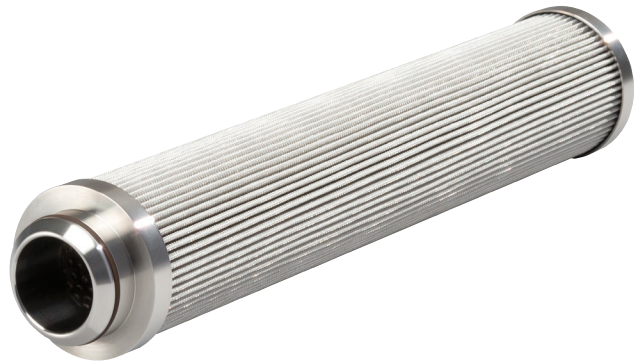
Ref.	Part Number	Description
1	945924	Head, SAE-24
	945684	Head, 2" NPTF (2" - 11 1/2)
2	945667	Cover
3	945666	Bowl
4	945704	Fill Port Plug (no O-ring)
5	DPIM3MVS08RX1	Visual 73psi (5bar) (Fluorocarbon)
	DPIM3MES08RX1	Visual 73psi (5bar) (Ethylene Propylene)
	FMUT1MVRS08	Electrical 73psi (5bar) IP65 DIN 43650 (Fluorocarbon)
	FMUT1MERS08	Electrical 73psi (5bar) IP65 DIN 43650 (Ethylene Propylene)
6	E82240	Bowl O-Ring (Ethylene Propylene)
	V92240	Bowl O-Ring (Fluorocarbon)
7	E83905	SAE-5 Fill port O-Ring (Ethylene Propylene)
	V93905	SAE-5 Fill port O-Ring (Fluorocarbon)
8	942736	Back up ring
9	942508	Indicator Plug
10	V93908	Indicator Plug O-ring (Fluorocarbon)
	E83908	Indicator Plug O-ring (Ethylene Propylene)
11	V93906	Indicator Plug O-ring (Fluorocarbon)
	E83906	Indicator Plug O-ring (Ethylene Propylene)

Drawings are for reference only.
Contact factory for current version.



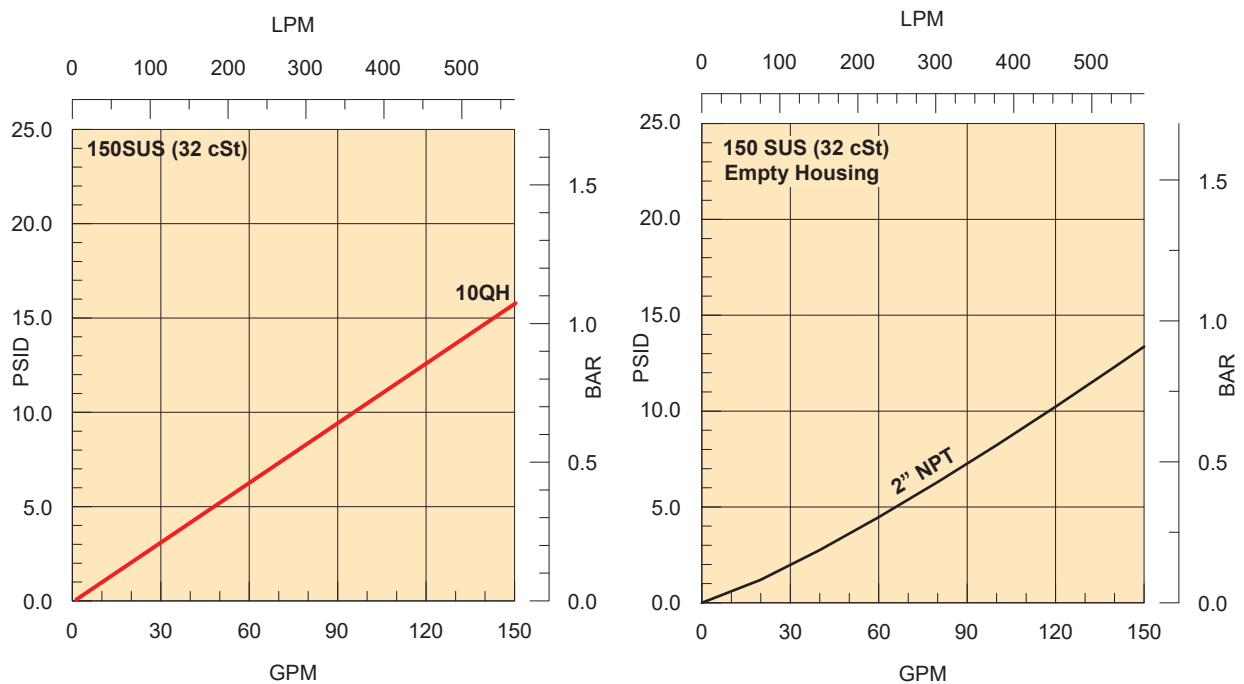
40S Series

Element Performance



Results typical from Multi-pass tests run per test standard ISO 16889 @ 50 gpm to 100 psid terminal - 10 mg/L BUGL

Flow vs Pressure Loss



40S Series¹

Stainless Steel High Pressure Filters

How To Order

Select the desired symbol (in the correct position) to construct a model code. Example:

BOX 1	BOX 2	BOX 3	BOX 4	BOX 5	BOX 6	BOX 7	BOX 8
40S	2	10QH	E	M3	X	S24	2

BOX 1: Filter Series	
Symbol	Description
40S	High Pressure Filter, 100 gpm nominal

BOX 4: Seal Material	
Symbol	Description
V	Fluorocarbon (FKM)
E ⁴	Ethylene Propylene (EPR)

BOX 7: Ports	
Symbol	Description
S24	SAE-24 (1 ⁷ / ₈ " - 12 UN-2B)
N32	2" NPTF (2" - 11 1/2)

BOX 2: Element Length	
Symbol	Description
2	Double

BOX 5: Indicator ⁵	
Symbol	Description
M3	Visual
T1	Electrical IP65 DIN 43650

BOX 8: Options	
Symbol	Description
2	No Bypass

BOX 3: Media Code ^{2, 3}	
Symbol	Description
10QH	Microglass, 10 micron, high collapse

BOX 6: Bypass	
Symbol	Description
X	No bypass

Notes:

1. The filter includes the element you select already installed.
2. 2,000 psid collapse.
3. For other options contact the division.
4. Recommended for DI Water applications.
5. Both indicators are 73 psid (5 bar)

Replacement Elements

	Media	Fluorocarbon	Ethylene Propylene
		Part Number	Part Number
No Bypass	10QH	945776Q	945777Q



Hydraulic & Fuel Filtration Division
www.parker.com/emhff

Last updated January, 2024

Parker's willingness to conduct business with Buyer is expressly conditioned on Buyer's assent to Parker's Offer of Sale. www.parker.com/saleterms