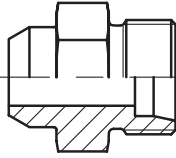
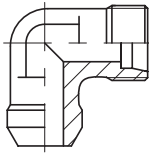
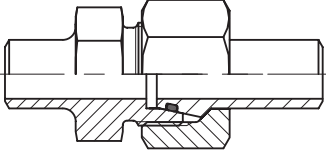
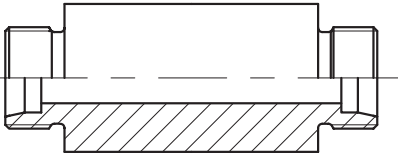
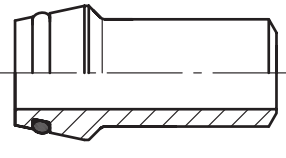
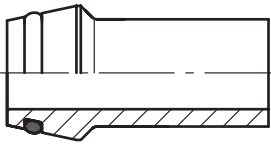

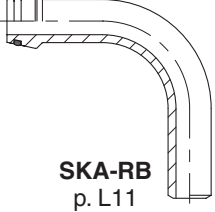
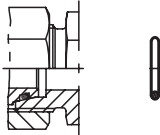




EO[®] Ermeto Original
Weld fittings

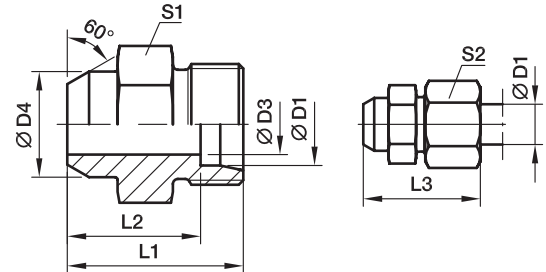


Visual index

| | | |
|------------------------------|---|--|
| <p>Tube to weld</p> |  <p>AS p. L3</p> |  <p>WAS p. L4</p> |
| <p>Weld fitting</p> |  <p>ASK p. L5</p> | |
| <p>Weld bulkhead</p> |  <p>ESV p. L6</p> | |
| <p>Weld nipple</p> |  <p>SKA p. L7</p> |  <p>SKA-ORB p. L10</p> |
| <p>Reducing weld nipple</p> |  <p>SKAR p. L8/9</p> | |
| <p>Tube bend weld nipple</p> |  <p>SKA-RB p. L11</p> | |
| <p>O-ring</p> |  <p>O-ring p. L12</p> | |

AS Weld connector

Butt weld / EO 24° cone end



| Series | D1 | D3 | D4 | L1 | L2 | L3 | S1 | S2 | Weight g/1 piece | Order code | PN (bar) ¹⁾ | |
|-----------------|----|----|----|----|------|----|----|----|---------------------|--------------|------------------------|-----------------|
| | | | | | | | | | | | Steel | Stainless Steel |
| L ³⁾ | 06 | 4 | 10 | 21 | 14.0 | 29 | 12 | 14 | 11 | AS06L | 315 | 315 |
| | 08 | 6 | 12 | 23 | 16.0 | 31 | 14 | 17 | 15 | AS08L | 315 | 315 |
| | 10 | 8 | 14 | 25 | 18.0 | 33 | 17 | 19 | 22 | AS10L | 315 | 315 |
| | 12 | 10 | 16 | 25 | 18.0 | 33 | 19 | 22 | 25 | AS12L | 315 | 315 |
| | 15 | 12 | 19 | 29 | 22.0 | 37 | 22 | 27 | 44 | AS15L | 315 | 315 |
| | 18 | 15 | 22 | 31 | 23.5 | 40 | 27 | 32 | 67 | AS18L | 315 | 315 |
| | 22 | 19 | 27 | 36 | 28.5 | 45 | 32 | 36 | 98 | AS22L | 160 | 160 |
| | 28 | 24 | 32 | 38 | 30.5 | 47 | 41 | 41 | 165 | AS28L | 160 | 160 |
| | 35 | 30 | 40 | 43 | 32.5 | 54 | 46 | 50 | 232 | AS35L | 160 | 160 |
| | 42 | 36 | 46 | 46 | 35.0 | 58 | 55 | 60 | 342 | AS42L | 160 | 160 |
| S ⁴⁾ | 06 | 4 | 11 | 26 | 19.0 | 34 | 14 | 17 | 21 | AS06S | 630 | 630 |
| | 08 | 5 | 13 | 28 | 21.0 | 36 | 17 | 19 | 31 | AS08S | 630 | 630 |
| | 10 | 7 | 15 | 30 | 22.5 | 39 | 19 | 22 | 41 | AS10S | 630 | 630 |
| | 12 | 8 | 17 | 32 | 24.5 | 41 | 22 | 24 | 93 | AS12S | 630 | 630 |
| | 14 | 10 | 19 | 35 | 27.0 | 45 | 24 | 27 | 55 | AS14S | 630 | 630 |
| | 16 | 12 | 21 | 35 | 26.5 | 45 | 27 | 30 | 82 | AS16S | 400 | 400 |
| | 20 | 16 | 26 | 40 | 29.5 | 51 | 32 | 36 | 131 | AS20S | 400 | 400 |
| | 25 | 20 | 31 | 44 | 32.0 | 56 | 41 | 46 | 219 | AS25S | 400 | 400 |
| | 30 | 25 | 36 | 49 | 35.5 | 62 | 46 | 50 | 297 | AS30S | 400 | 400 |
| | 38 | 32 | 44 | 54 | 38.0 | 69 | 55 | 60 | 448 | AS38S | 315 | 315 |

¹⁾ Pressure shown = item deliverable

³⁾ L = light series; ⁴⁾ S = heavy series

$\frac{PN \text{ (bar)}}{10} = PN \text{ (MPa)}$

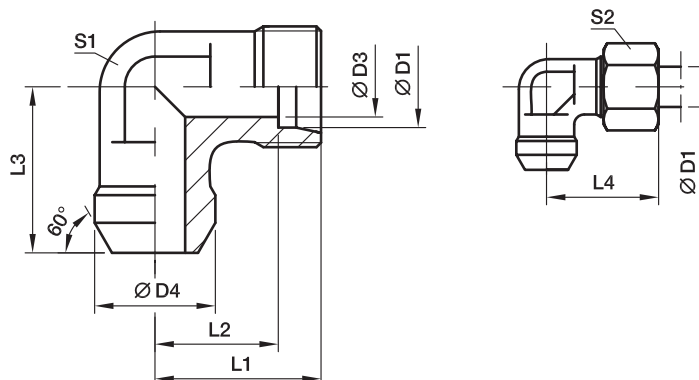
Delivery without nut and ring. Information on ordering complete fittings or alternative sealing materials see page I7.

*Please add the **suffixes** below according to the material/surface required.

| Order code suffixes | | |
|---------------------|-----------------------------|----------|
| Material | Suffix surface and material | Example |
| Steel | | AS16SX |
| Stainless Steel | 71X | AS16S71X |

WAS Weld elbow

Butt weld / EO 24° cone end



| Series | D1 | D3 | D4 | L1 | L2 | L3 | L4 | S1 | S2 | Weight g/1 piece | Order code | PN (bar) ¹⁾ | |
|-----------------|----|----|----|----|------|----|----|----|----|---------------------|---------------|------------------------|-----------------|
| | | | | | | | | | | | | Steel | Stainless Steel |
| L ³⁾ | 06 | 4 | 10 | 19 | 12.0 | 19 | 27 | 12 | 14 | 20 | WAS06L | 315 | 315 |
| | 08 | 6 | 12 | 21 | 14.0 | 23 | 29 | 12 | 17 | 25 | WAS08L | 315 | 315 |
| | 10 | 8 | 14 | 22 | 15.0 | 24 | 30 | 14 | 19 | 34 | WAS10L | 315 | 315 |
| | 12 | 10 | 16 | 24 | 17.0 | 25 | 32 | 17 | 22 | 45 | WAS12L | 315 | 315 |
| | 15 | 12 | 19 | 28 | 21.0 | 30 | 36 | 19 | 27 | 81 | WAS15L | 315 | 315 |
| | 18 | 15 | 22 | 31 | 23.5 | 33 | 40 | 24 | 32 | 113 | WAS18L | 315 | 315 |
| | 22 | 19 | 27 | 35 | 27.5 | 37 | 44 | 27 | 36 | 151 | WAS22L | 160 | 160 |
| | 28 | 24 | 32 | 38 | 30.5 | 42 | 47 | 36 | 41 | 271 | WAS28L | 160 | 160 |
| | 35 | 30 | 40 | 45 | 34.5 | 49 | 56 | 41 | 50 | 113 | WAS35L | 160 | 160 |
| | 42 | 36 | 46 | 51 | 40.0 | 57 | 63 | 50 | 60 | 420 | WAS42L | 160 | 160 |
| S ⁴⁾ | 06 | 4 | 11 | 23 | 16.0 | 23 | 31 | 12 | 17 | 31 | WAS06S | 630 | 630 |
| | 08 | 5 | 13 | 24 | 17.0 | 24 | 32 | 14 | 19 | 44 | WAS08S | 630 | 630 |
| | 10 | 7 | 15 | 25 | 17.5 | 25 | 34 | 17 | 22 | 59 | WAS10S | 630 | 630 |
| | 12 | 8 | 17 | 29 | 21.5 | 29 | 38 | 17 | 24 | 78 | WAS12S | 630 | 630 |
| | 14 | 10 | 19 | 30 | 22.0 | 30 | 40 | 19 | 27 | 98 | WAS14S | 630 | 630 |
| | 16 | 12 | 21 | 33 | 24.5 | 33 | 43 | 24 | 30 | 133 | WAS16S | 400 | 400 |
| | 20 | 16 | 26 | 37 | 26.5 | 37 | 48 | 27 | 36 | 192 | WAS20S | 400 | 400 |
| | 25 | 20 | 31 | 42 | 30.0 | 42 | 54 | 36 | 46 | 351 | WAS25S | 400 | 400 |
| | 30 | 25 | 36 | 49 | 35.5 | 49 | 62 | 41 | 50 | 525 | WAS30S | 400 | 400 |
| | 38 | 32 | 44 | 57 | 41.0 | 57 | 72 | 50 | 60 | 785 | WAS38S | 315 | 315 |

¹⁾ Pressure shown = item deliverable

³⁾ L = light series; ⁴⁾ S = heavy series

PN (bar) = PN (MPa)

10

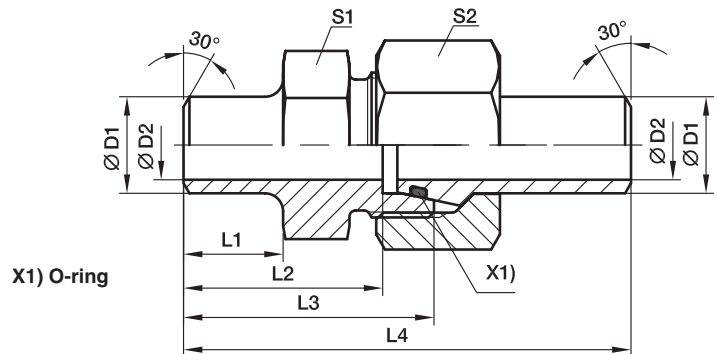
Delivery without nut and ring. Information on ordering complete fittings or alternative sealing materials see page 17.

*Please add the **suffixes** below according to the material/surface required.

| Order code suffixes | | |
|---------------------|-----------------------------|-----------|
| Material | Suffix surface and material | Example |
| Steel | | WAS16SX |
| Stainless Steel | 71X | WAS16S71X |

ASK Weld fitting for tubes

Butt weld / Butt weld



| Series | D1 | D2 | L1 | L2 | L3 | L4 | S1 | S2 | recommended tube | Weight g/1 piece | Order code | PN (bar) ¹⁾ | |
|-----------------|--------|------|------|------|-------|------|----|--------|------------------|------------------|--------------------|------------------------|-----------------|
| | | | | | | | | | | | | Steel | Stainless Steel |
| S ⁴⁾ | 10 | 8 | 10.0 | 24.5 | 32.0 | 58.0 | 19 | 22 | 10x1.0 | 75 | ASK610X1S | 249 | 242 |
| | 10 | 7 | 10.0 | 24.5 | 32.0 | 58.0 | 19 | 22 | 10x1.5 | 81 | ASK610X1.5S | 358 | 349 |
| | 10 | 6 | 10.0 | 24.5 | 32.0 | 58.0 | 19 | 22 | 10x2.0 | 86 | ASK610X2S | 460 | 447 |
| | 12 | 9 | 15.0 | 29.5 | 37.0 | 63.0 | 22 | 24 | 12x1.5 | 106 | ASK612X1.5S | 305 | 297 |
| | 12 | 8 | 15.0 | 29.5 | 37.0 | 63.0 | 22 | 24 | 12x2.0 | 107 | ASK612X2S | 393 | 383 |
| | 12 | 7 | 15.0 | 29.5 | 37.0 | 63.0 | 22 | 24 | 12x2.5 | 109 | ASK612X2.5S | 476 | 463 |
| | 16 | 13 | 16.5 | 33.0 | 41.5 | 73.5 | 27 | 30 | 16x1.5 | 166 | ASK616X1.5S | 234 | 228 |
| | 16 | 12 | 16.5 | 33.0 | 41.5 | 73.5 | 27 | 30 | 16x2.0 | 175 | ASK616X2S | 305 | 297 |
| | 16 | 11 | 16.5 | 33.0 | 41.5 | 73.5 | 27 | 30 | 16x2.5 | 184 | ASK616X2.5S | 372 | 362 |
| | 16 | 10 | 16.5 | 33.0 | 41.5 | 73.5 | 27 | 30 | 16x3.0 | 193 | ASK616X3S | 400 | 400 |
| | 20 | 16 | 19.0 | 36.5 | 47.0 | 83.5 | 32 | 36 | 20x2.0 | 301 | ASK620X2S | 249 | 242 |
| | 20 | 15 | 19.0 | 36.5 | 47.0 | 83.5 | 32 | 36 | 20x2.5 | 311 | ASK620X2.5S | 305 | 297 |
| 20 | 14 | 19.0 | 36.5 | 47.0 | 83.5 | 32 | 36 | 20x3.0 | 316 | ASK620X3S | 358 | 349 | |
| 20 | 12 | 19.0 | 36.5 | 47.0 | 83.5 | 32 | 36 | 20x4.0 | 322 | ASK620X4S | 400 | 400 | |
| 25 | 19 | 19.5 | 39.5 | 51.5 | 92.5 | 41 | 46 | 25x3.0 | 551 | ASK625X3S | 294 | 286 | |
| 25 | 17 | 19.5 | 39.5 | 51.5 | 92.5 | 41 | 46 | 25x4.0 | 559 | ASK625X4S | 379 | 369 | |
| 25 | 15 | 19.5 | 39.5 | 51.5 | 92.5 | 41 | 46 | 25x5.0 | 589 | ASK625X5S | 400 | 400 | |
| 30 | 24 | 23.0 | 44.5 | 58.0 | 101.5 | 46 | 50 | 30x3.0 | 671 | ASK630X3S | 249 | 242 | |
| 30 | 22 | 23.0 | 44.5 | 58.0 | 101.5 | 46 | 50 | 30x4.0 | 679 | ASK630X4S | 323 | 314 | |
| 30 | 20 | 23.0 | 44.5 | 58.0 | 101.5 | 46 | 50 | 30x5.0 | 726 | ASK630X5S | 393 | 383 | |
| 30 | 18 | 23.0 | 44.5 | 58.0 | 101.5 | 46 | 50 | 30x6.0 | 791 | ASK630X6S | 400 | 400 | |
| 38 | 30 | 22.0 | 44.0 | 60.0 | 108.0 | 55 | 60 | 38x4.0 | 988 | ASK638X4S | 261 | 254 | |
| 38 | 28 | 22.0 | 44.0 | 60.0 | 108.0 | 55 | 60 | 38x5.0 | 1044 | ASK638X5S | 315 | 311 | |
| 38 | 26 | 22.0 | 44.0 | 60.0 | 108.0 | 55 | 60 | 38x6.0 | 1108 | ASK638X6S | 315 | 315 | |
| 38 | 24 | 22.0 | 44.0 | 60.0 | 108.0 | 55 | 60 | 38x7.0 | 1205 | ASK638X7S | 315 | 315 | |

¹⁾ Pressure shown = item deliverable

⁴⁾ S = heavy series

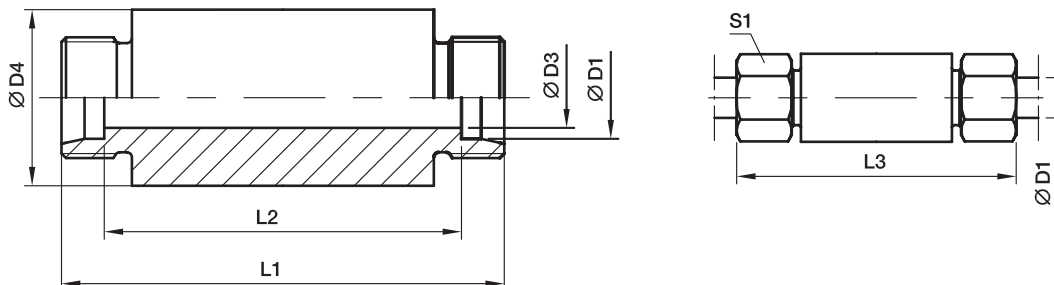
PN (bar) = PN (MPa)
10

*Please add the **suffixes** below according to the material/surface required.

| Order code suffixes | | | |
|---------------------|-----------------------------|-------------|---|
| Material | Suffix surface and material | Example | Standard sealing material (no additional suffix needed) |
| Steel | | ASK616X2S | NBR |
| Stainless Steel | 71 | ASK616X2S71 | VIT |

ESV Weld bulkhead fitting

EO 24° cone end / EO 24° cone end



| Series | D1 | D3 | D4 | L1 | L2 | L3 | S1 | Weight g/1 piece | Order code | PN (bar) ¹⁾ | |
|-----------------|----|----|----|-----|----|-----|----|---------------------|---------------|------------------------|-----------------|
| | | | | | | | | | | Steel | Stainless Steel |
| L ³⁾ | 06 | 4 | 18 | 70 | 56 | 85 | 14 | 103 | ESV06L | 500 | 315 |
| | 08 | 6 | 20 | 70 | 56 | 85 | 17 | 121 | ESV08L | 500 | 315 |
| | 10 | 8 | 22 | 72 | 58 | 87 | 19 | 142 | ESV10L | 500 | 315 |
| | 12 | 10 | 25 | 72 | 58 | 87 | 22 | 176 | ESV12L | 400 | 315 |
| | 15 | 12 | 28 | 84 | 70 | 100 | 27 | 262 | ESV15L | 400 | 315 |
| | 18 | 15 | 32 | 84 | 69 | 101 | 32 | 333 | ESV18L | 400 | 315 |
| | 22 | 19 | 36 | 88 | 73 | 105 | 36 | 394 | ESV22L | 250 | 160 |
| | 28 | 24 | 40 | 88 | 73 | 106 | 41 | 448 | ESV28L | 250 | 160 |
| | 35 | 30 | 50 | 92 | 71 | 114 | 50 | 713 | ESV35L | 250 | 160 |
| | 42 | 36 | 60 | 92 | 70 | 115 | 60 | 997 | ESV42L | 250 | 160 |
| S ⁴⁾ | 06 | 4 | 20 | 74 | 60 | 89 | 17 | 135 | ESV06S | 800 | 630 |
| | 08 | 5 | 22 | 74 | 60 | 89 | 19 | 163 | ESV08S | 800 | 630 |
| | 10 | 7 | 25 | 74 | 59 | 91 | 22 | 201 | ESV10S | 800 | 630 |
| | 12 | 8 | 28 | 74 | 59 | 91 | 24 | 249 | ESV12S | 630 | 630 |
| | 14 | 10 | 30 | 88 | 72 | 107 | 27 | 337 | ESV14S | 630 | 630 |
| | 16 | 12 | 35 | 88 | 71 | 107 | 30 | 441 | ESV16S | 630 | 400 |
| | 20 | 16 | 38 | 92 | 71 | 114 | 36 | 509 | ESV20S | 420 | 400 |
| | 25 | 20 | 45 | 96 | 72 | 120 | 46 | 720 | ESV25S | 420 | 400 |
| | 30 | 25 | 50 | 100 | 73 | 126 | 50 | 873 | ESV30S | 420 | 400 |
| | 38 | 32 | 60 | 104 | 72 | 133 | 60 | 1248 | ESV38S | 420 | 315 |

¹⁾ Pressure shown = item deliverable

³⁾ L = light series; ⁴⁾ S = heavy series

$$\frac{\text{PN (bar)}}{10} = \text{PN (MPa)}$$

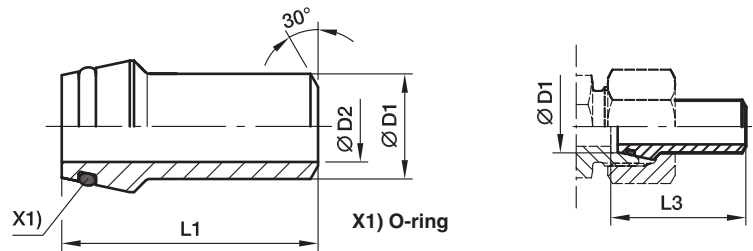
Delivery without nut and ring. Information on ordering complete fittings or alternative sealing materials see page I7.

*Please add the **suffixes** below according to the material/surface required.

| Order code suffixes | | |
|---------------------|-----------------------------|-----------|
| Material | Suffix surface and material | Example |
| Steel | | ESV16SX |
| Stainless Steel | 71X | ESV16S71X |

SKA Weld nipple

EO 24° O-ring weld nipple / butt weld



| Series | D1 | D2 | L1 | L3 | recommended tube | Weight g/1 piece | Order code | PN (bar) ¹⁾ | | |
|----------------------------------|-----------------|------|------|------|------------------|------------------|------------------|------------------------|-----------------|-----|
| | | | | | | | | Steel | Stainless Steel | |
| L ³⁾ /S ⁴⁾ | 06 | 3.0 | 31.0 | 31.5 | 06x1.5 | 7 | SKA06X1.5 | 528 | 539 | |
| | 08 | 4.5 | 31.0 | 31.5 | 08x1.5 | 11 | SKA08X1.5 | 414 | 424 | |
| | 08 | 4.0 | 31.0 | 31.5 | 08x2.0 | 11 | SKA08X2 | 528 | 539 | |
| | 10 | 8.0 | 32.5 | 33.5 | 10x1.0 | 13 | SKA10X1 | 249 | 242 | |
| | 10 | 7.0 | 32.5 | 33.5 | 10x1.5 | 13 | SKA10X1.5 | 358 | 349 | |
| | 10 | 6.0 | 32.5 | 33.5 | 10x2.0 | 16 | SKA10X2 | 460 | 447 | |
| | 12 | 9.0 | 32.5 | 33.5 | 12x1.5 | 21 | SKA12X1.5 | 305 | 297 | |
| | 12 | 8.0 | 32.5 | 33.5 | 12x2.0 | 20 | SKA12X2 | 393 | 383 | |
| | 12 | 7.0 | 32.5 | 33.5 | 12x2.5 | 22 | SKA12X2.5 | 476 | 463 | |
| | L ³⁾ | 15 | 11.0 | 34.0 | 34.5 | 15x2.0 | 29 | SKA15X2 | 315 | 315 |
| | | 15 | 10.0 | 34.0 | 34.5 | 15x2.5 | 31 | SKA15X2.5 | 315 | 315 |
| | | 18 | 13.0 | 35.5 | 36.5 | 18x2.5 | 40 | SKA18X2.5 | 315 | 315 |
| 22 | | 17.0 | 38.5 | 39.5 | 22x2.5 | 57 | SKA22X2.5 | 160 | 160 | |
| 28 | | 23.0 | 41.5 | 42.5 | 28x2.5 | 73 | SKA28X2.5 | 160 | 160 | |
| 28 | | 22.0 | 41.5 | 42.5 | 28x3.0 | 89 | SKA28X3 | 160 | 160 | |
| 35 | | 28.0 | 47.5 | 49.5 | 35x3.5 | 140 | SKA35X3.5 | 160 | 160 | |
| 35 | | 27.0 | 47.5 | 49.5 | 35x4.0 | 150 | SKA35X4 | 160 | 160 | |
| 42 | | 36.0 | 47.5 | 50.0 | 42x3.0 | 155 | SKA42X3 | 160 | 160 | |
| 42 | | 34.0 | 47.5 | 50.0 | 42x4.0 | 190 | SKA42X4 | 160 | 160 | |
| S ⁴⁾ | | 14 | 10.0 | 38.5 | 39.5 | 14x2.0 | 26 | SKA14X2 | 343 | 334 |
| | | 14 | 8.0 | 38.5 | 39.5 | 14x3.0 | 33 | SKA14X3 | 487 | 474 |
| | 16 | 13.0 | 39.0 | 40.5 | 16x1.5 | 32 | SKA16X1.5 | 234 | 228 | |
| | 16 | 12.0 | 39.0 | 40.5 | 16x2.0 | 31 | SKA16X2 | 305 | 297 | |
| | 16 | 11.0 | 39.0 | 40.5 | 16x2.5 | 38 | SKA16X2.5 | 372 | 362 | |
| | 16 | 10.0 | 39.0 | 40.5 | 16x3.0 | 41 | SKA16X3 | 400 | 400 | |
| | 20 | 16.0 | 45.0 | 47.0 | 20x2.0 | 57 | SKA20X2 | 249 | 242 | |
| | 20 | 15.0 | 45.0 | 47.0 | 20x2.5 | 57 | SKA20X2.5 | 305 | 297 | |
| | 20 | 14.0 | 45.0 | 47.0 | 20x3.0 | 64 | SKA20X3 | 358 | 349 | |
| | 20 | 13.0 | 45.0 | 47.0 | 20x3.5 | 71 | SKA20X3.5 | 400 | 400 | |
| | 20 | 12.0 | 45.0 | 47.0 | 20x4.0 | 78 | SKA20X4 | 400 | 400 | |
| | 25 | 19.0 | 49.5 | 53.0 | 25x3.0 | 89 | SKA25X3 | 294 | 286 | |
| | 25 | 18.0 | 49.5 | 53.0 | 25x3.5 | 100 | SKA25X3.5 | 337 | 328 | |
| | 25 | 17.0 | 49.5 | 53.0 | 25x4.0 | 111 | SKA25X4 | 379 | 369 | |
| | 25 | 15.0 | 49.5 | 53.0 | 25x5.0 | 125 | SKA25X5 | 400 | 400 | |
| | 30 | 24.0 | 52.0 | 57.0 | 30x3.0 | 113 | SKA30X3 | 249 | 242 | |
| | 30 | 22.0 | 52.0 | 57.0 | 30x4.0 | 141 | SKA30X4 | 323 | 314 | |
| | 30 | 20.0 | 52.0 | 57.0 | 30x5.0 | 166 | SKA30X5 | 393 | 383 | |
| | 30 | 18.0 | 52.0 | 57.0 | 30x6.0 | 188 | SKA30X6 | 400 | 400 | |
| | 38 | 32.0 | 56.5 | 64.0 | 38x3.0 | 163 | SKA38X3 | 200 | 195 | |
| | 38 | 30.0 | 56.5 | 64.0 | 38x4.0 | 209 | SKA38X4 | 261 | 254 | |
| | 38 | 28.0 | 56.5 | 64.0 | 38x5.0 | 247 | SKA38X5 | 315 | 315 | |
| | 38 | 26.0 | 56.5 | 64.0 | 38x6.0 | 270 | SKA38X6 | 315 | 315 | |
| | 38 | 24.0 | 56.5 | 64.0 | 38x7.0 | 270 | SKA38X7 | 315 | 315 | |

¹⁾ Pressure shown = item deliverable

³⁾ L = light series; ⁴⁾ S = heavy series

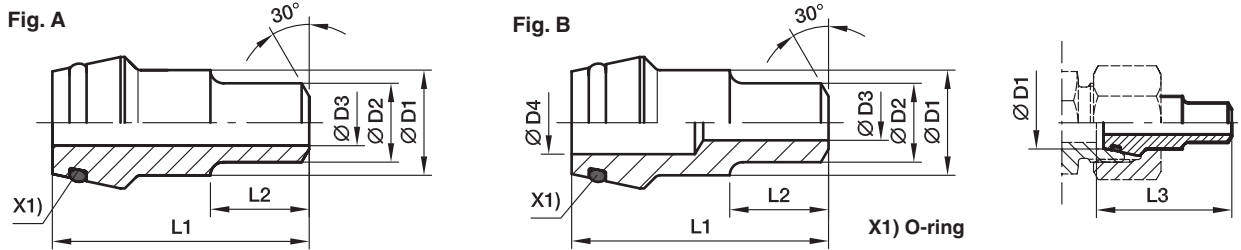
PN (bar) = PN (MPa)
10

*Please add the **suffixes** below according to the material/surface required.

| Order code suffixes | | | |
|---------------------|-----------------------------|-----------|---|
| Material | Suffix surface and material | Example | Standard sealing material (no additional suffix needed) |
| Steel | | SKA16X2 | NBR |
| Stainless Steel | 71 | SKA16X271 | VIT |

SKAR Reducing weld nipple

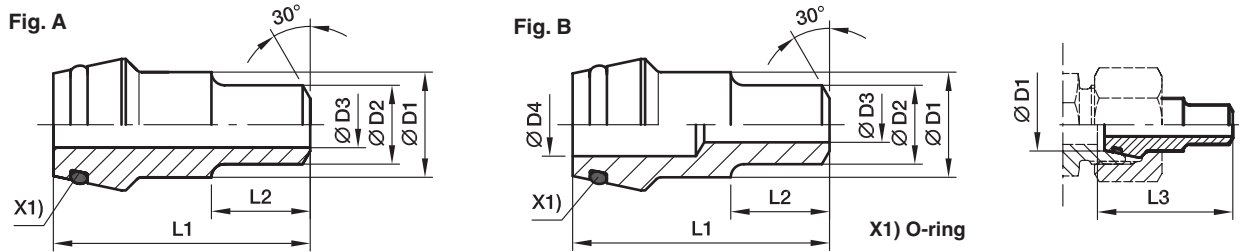
EO 24° O-ring weld nipple / butt weld



| Series | D1 | D2 | D3 | D4 | L1 | L2 | L3 | Fig. | Weight g/1 piece | Order code | PN (bar) ¹⁾ | | |
|----------------------------------|----|----|------|----|------|------|------|------|---------------------|---------------|------------------------|-----------------|-----|
| | | | | | | | | | | | Steel | Stainless Steel | |
| L ³ /S ⁴) | 08 | 06 | 3 | 5 | 31.0 | 12 | 31.5 | A | 14 | SKAR08/06X1.5 | 528 | 539 | |
| | 10 | 06 | 3 | | 32.5 | 12 | 33.5 | B | 15 | SKAR10/06X1.5 | 528 | 539 | |
| | 10 | 08 | 5 | | 32.5 | 12 | 33.5 | A | 16 | SKAR10/08X1.5 | 414 | 424 | |
| | 10 | 08 | 4 | 6 | 32.5 | 12 | 33.5 | A | 17 | SKAR10/08X2 | 528 | 539 | |
| | 12 | 08 | 5 | | 32.5 | 14 | 33.5 | A | 18 | SKAR12/08X1.5 | 414 | 424 | |
| | 12 | 08 | 4 | | 32.5 | 14 | 33.5 | B | 20 | SKAR12/08X2 | 528 | 539 | |
| | 12 | 10 | 7 | | 32.5 | 14 | 33.5 | A | 18 | SKAR12/10X1.5 | 358 | 349 | |
| S ⁴) | 16 | 10 | 6 | | 39.0 | 15 | 40.5 | A | 43 | SKAR16/10X2 | 400 | 400 | |
| | 16 | 12 | 9 | | 39.0 | 15 | 40.5 | A | 45 | SKAR16/12X1.5 | 305 | 297 | |
| | 16 | 12 | 8 | | 39.0 | 15 | 40.5 | A | 47 | SKAR16/12X2 | 393 | 383 | |
| | 16 | 12 | 7 | | 39.0 | 15 | 40.5 | A | 49 | SKAR16/12X2.5 | 400 | 400 | |
| | 20 | 12 | 9 | | 45.0 | 17 | 47.0 | A | 76 | SKAR20/12X1.5 | 305 | 297 | |
| | 20 | 12 | 8 | | 45.0 | 17 | 47.0 | A | 78 | SKAR20/12X2 | 393 | 383 | |
| | 20 | 12 | 7 | | 45.0 | 17 | 47.0 | A | 80 | SKAR20/12X2.5 | 400 | 400 | |
| | 20 | 12 | 6 | | 45.0 | 17 | 47.0 | A | 86 | SKAR20/12X3 | 400 | 400 | |
| | 20 | 16 | 12 | | 45.0 | 17 | 47.0 | A | 74 | SKAR20/16X2 | 305 | 297 | |
| | 20 | 16 | 11 | | 45.0 | 17 | 47.0 | A | 76 | SKAR20/16X2.5 | 372 | 362 | |
| | 20 | 16 | 10 | | 45.0 | 17 | 47.0 | A | 78 | SKAR20/16X3 | 400 | 400 | |
| | 25 | 12 | 9 | | 49.5 | 20 | 53.0 | A | 117 | SKAR25/12X1.5 | 305 | 297 | |
| | 25 | 12 | 8 | | 49.5 | 20 | 53.0 | A | 121 | SKAR25/12X2 | 393 | 383 | |
| | 25 | 12 | 7 | | 49.5 | 20 | 53.0 | A | 125 | SKAR25/12X2.5 | 400 | 400 | |
| | 25 | 12 | 6 | 15 | 49.5 | 20 | 53.0 | B | 129 | SKAR25/12X3 | 400 | 400 | |
| | 25 | 16 | 12 | | 49.5 | 20 | 53.0 | A | 115 | SKAR25/16X2 | 305 | 297 | |
| | 25 | 16 | 11 | | 49.5 | 20 | 53.0 | A | 120 | SKAR25/16X2.5 | 372 | 362 | |
| | 25 | 16 | 10 | | 49.5 | 20 | 53.0 | A | 123 | SKAR25/16X3 | 400 | 400 | |
| | 25 | 20 | 16 | | 49.5 | 20 | 53.0 | A | 94 | SKAR25/20X2 | 249 | 242 | |
| | 25 | 20 | 15 | | 49.5 | 20 | 53.0 | A | 104 | SKAR25/20X2.5 | 305 | 297 | |
| | 25 | 20 | 14 | | 49.5 | 20 | 53.0 | A | 114 | SKAR25/20X3 | 358 | 349 | |
| | 25 | 20 | 12 | | 49.5 | 20 | 53.0 | A | 124 | SKAR25/20X4 | 400 | 400 | |
| | 30 | 12 | 9 | | 22 | 52.0 | 22 | 57.0 | B | 135 | SKAR30/12X1.5 | 305 | 297 |
| | 30 | 12 | 8 | | 22 | 52.0 | 22 | 57.0 | B | 145 | SKAR30/12X2 | 323 | 383 |
| | 30 | 12 | 6 | 22 | 52.0 | 22 | 57.0 | B | 155 | SKAR30/12X3 | 400 | 400 | |
| | 30 | 16 | 12 | | 52.0 | 22 | 57.0 | A | 166 | SKAR30/16X2 | 305 | 297 | |
| | 30 | 16 | 11 | | 52.0 | 22 | 57.0 | A | 176 | SKAR30/16X2.5 | 323 | 362 | |
| | 30 | 20 | 16 | | 52.0 | 22 | 57.0 | A | 149 | SKAR30/20X2 | 249 | 242 | |
| | 30 | 20 | 15 | | 52.0 | 22 | 57.0 | A | 159 | SKAR30/20X2.5 | 305 | 297 | |
| | 30 | 20 | 14 | | 52.0 | 22 | 57.0 | A | 169 | SKAR30/20X3 | 358 | 349 | |
| | 30 | 20 | 12 | | 52.0 | 22 | 57.0 | A | 184 | SKAR30/20X4 | 400 | 400 | |
| | 30 | 25 | 20 | | 52.0 | 22 | 57.0 | A | 141 | SKAR30/25X2.5 | 249 | 242 | |
| | 30 | 25 | 19 | | 52.0 | 22 | 57.0 | A | 156 | SKAR30/25X3 | 294 | 286 | |
| 30 | 25 | 17 | 52.0 | | 22 | 57.0 | A | 168 | SKAR30/25X4 | 379 | 369 | | |

SKAR Reducing weld nipple

EO 24° O-ring weld nipple / butt weld



| Series | D1 | D2 | D3 | D4 | L1 | L2 | L3 | Fig. | Weight g/1 piece | Order code | PN (bar) ¹⁾ | |
|-----------------|----|----|----|----|------|----|------|------|---------------------|----------------------|------------------------|-----------------|
| | | | | | | | | | | | Steel | Stainless Steel |
| S ⁴⁾ | 38 | 12 | 9 | 28 | 56.5 | 26 | 64.0 | B | 219 | SKAR38/12X1.5 | 305 | 297 |
| | 38 | 12 | 8 | 28 | 56.5 | 26 | 64.0 | B | 234 | SKAR38/12X2 | 315 | 315 |
| | 38 | 12 | 6 | 28 | 56.5 | 26 | 64.0 | B | 249 | SKAR38/12X3 | 315 | 315 |
| | 38 | 16 | 12 | | 56.5 | 26 | 64.0 | A | 279 | SKAR38/16X2 | 305 | 297 |
| | 38 | 16 | 11 | | 56.5 | 26 | 64.0 | A | 294 | SKAR38/16X2.5 | 315 | 315 |
| | 38 | 16 | 10 | | 56.5 | 26 | 64.0 | A | 309 | SKAR38/16X3 | 315 | 315 |
| | 38 | 20 | 16 | | 56.5 | 26 | 64.0 | A | 263 | SKAR38/20X2 | 249 | 242 |
| | 38 | 20 | 15 | | 56.5 | 26 | 64.0 | A | 278 | SKAR38/20X2.5 | 305 | 297 |
| | 38 | 20 | 14 | | 56.5 | 26 | 64.0 | A | 293 | SKAR38/20X3 | 315 | 315 |
| | 38 | 20 | 12 | | 56.5 | 26 | 64.0 | A | 299 | SKAR38/20X4 | 315 | 315 |
| | 38 | 25 | 20 | | 56.5 | 26 | 64.0 | A | 242 | SKAR38/25X2.5 | 249 | 242 |
| | 38 | 25 | 19 | | 56.5 | 26 | 64.0 | A | 262 | SKAR38/25X3 | 294 | 286 |
| | 38 | 25 | 17 | | 56.5 | 26 | 64.0 | B | 285 | SKAR38/25X4 | 315 | 315 |
| | 38 | 30 | 24 | | 56.5 | 26 | 64.0 | A | 256 | SKAR38/30X3 | 249 | 242 |
| | 38 | 30 | 22 | | 56.5 | 26 | 64.0 | A | 286 | SKAR38/30X4 | 315 | 315 |
| | 38 | 30 | 20 | | 56.5 | 26 | 64.0 | A | 316 | SKAR38/30X5 | 315 | 315 |

¹⁾ Pressure shown = item deliverable

³⁾ L = light series; ⁴⁾ S = heavy series

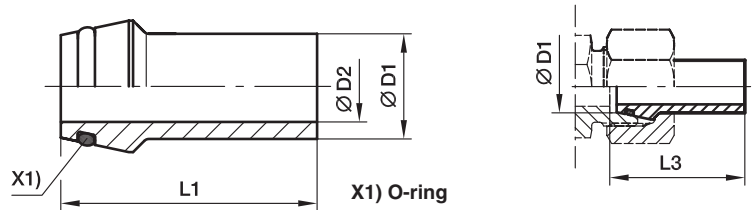
$$\frac{\text{PN (bar)}}{10} = \text{PN (MPa)}$$

*Please add the **suffixes** below according to the material/surface required.

| Order code suffixes | | | |
|---------------------|-----------------------------|---------------|---|
| Material | Suffix surface and material | Example | Standard sealing material (no additional suffix needed) |
| Steel | | SKAR16/12X2 | NBR |
| Stainless Steel | 71 | SKAR16/12X271 | VIT |

SKA-ORB Weld nipple (orbital)

EO 24° O-ring weld nipple / butt weld (orbital)



| Series | D1 | D2 | L1 | L3 | recommended tube | Weight g/1 piece | Order code | PN (bar) ¹⁾ Stainless Steel |
|----------------------------------|----|------|------|------|------------------|------------------|---------------------|--|
| L ³⁾ /S ⁴⁾ | 10 | 6.0 | 37.5 | 38.5 | 10×1.5 | 13 | SKA10X1.5ORB | 358 |
| | 12 | 8.0 | 37.5 | 38.5 | 12×1.5 | 21 | SKA12X1.5ORB | 305 |
| | 12 | 8.0 | 37.5 | 38.5 | 12×2.0 | 255 | SKA12X2ORB | 393 |
| L ³⁾ | 18 | 13.0 | 38.0 | 39.0 | 18×2.0 | 43 | SKA18X2ORB | 290 |
| | 22 | 17.0 | 38.5 | 39.5 | 22×2.0 | 50 | SKA22X2ORB | 250 |
| | 28 | 22.0 | 41.5 | 42.5 | 28×2.0 | 69 | SKA28X2ORB | 204 |
| | 42 | 36.0 | 47.5 | 50.0 | 42×3.0 | 160 | SKA42X3ORB | 182 |
| S ⁴⁾ | 16 | 12.0 | 39.0 | 40.5 | 16×2.0 | 310 | SKA16X2ORB | 305 |
| | 20 | 14.0 | 45.0 | 47.0 | 20×3.0 | 640 | SKA20X3ORB | 358 |
| | 25 | 19.0 | 49.5 | 53.0 | 25×3.0 | 890 | SKA25X3ORB | 294 |

¹⁾ Pressure shown = item deliverable

³⁾ L = light series; ⁴⁾ S = heavy series

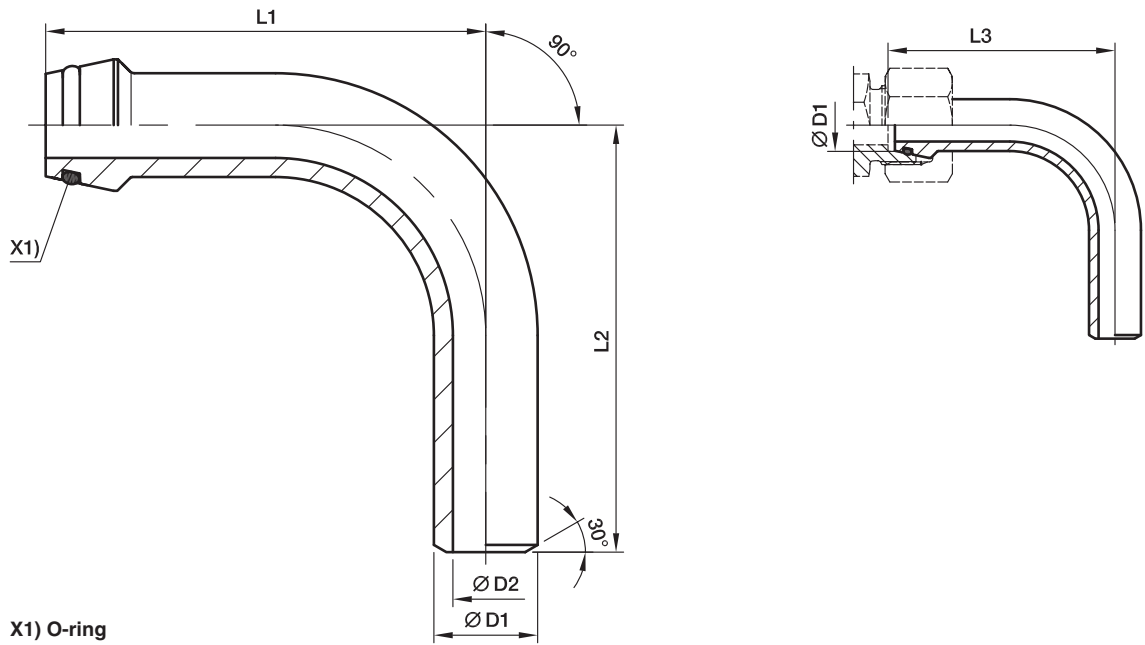
$$\frac{\text{PN (bar)}}{10} = \text{PN (MPa)}$$

*Please add the **suffixes** below according to the material/surface required.

| Order code suffixes | | | |
|---------------------|-----------------------------|--------------|---|
| Material | Suffix surface and material | Example | Standard sealing material (no additional suffix needed) |
| Stainless Steel | 71 | SKA16X2ORB71 | VIT |

SKA-RB Tube bend weld nipple

EO 24° O-ring weld nipple / butt weld



X1) O-ring

| Series | D1 | D2 | L1 | L2 | L3 | recommended tube | Weight g/1 piece | Order code | PN (bar) ¹⁾ | |
|-----------------|----|----|-----|-----|-------|------------------|------------------|--------------------|------------------------|-----------------|
| | | | | | | | | | Steel | Stainless Steel |
| S ⁴⁾ | 10 | 6 | 49 | 45 | 50.0 | 10×2.0 | 38 | SKA10X2RB | 460 | 447 |
| | 12 | 7 | 51 | 50 | 52.0 | 12×2.5 | 50 | SKA12X2.5RB | 476 | 463 |
| | 16 | 10 | 67 | 60 | 68.5 | 16×3.0 | 105 | SKA16X3RB | 400 | 400 |
| | 20 | 12 | 85 | 65 | 87.0 | 20×4.0 | 217 | SKA20X4RB | 400 | 400 |
| | 25 | 17 | 85 | 85 | 88.5 | 25×4.0 | 295 | SKA25X4RB | 379 | 369 |
| | 25 | 15 | 85 | 85 | 88.5 | 25×5.0 | 353 | SKA25X5RB | 400 | 400 |
| | 30 | 22 | 111 | 110 | 116.0 | 30×4.0 | 469 | SKA30X4RB | 323 | 314 |
| | 30 | 20 | 111 | 110 | 116.0 | 30×5.0 | 568 | SKA30X5RB | 393 | 383 |
| | 38 | 28 | 136 | 130 | 143.5 | 38×5.0 | 876 | SKA38X5RB | 315 | 315 |
| | 38 | 26 | 136 | 130 | 143.5 | 38×6.0 | 1045 | SKA38X6RB | 315 | 315 |

¹⁾ Pressure shown = item deliverable

⁴⁾ S = heavy series

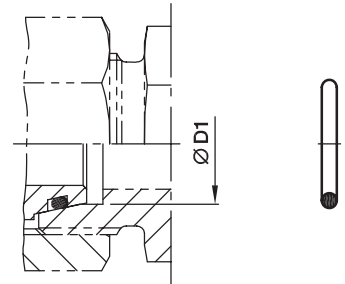
$$\frac{\text{PN (bar)}}{10} = \text{PN (MPa)}$$

*Please add the **suffixes** below according to the material/ surface required.

| Order code suffixes | | | |
|---------------------|-----------------------------|-------------|---|
| Material | Suffix surface and material | Example | Standard sealing material (no additional suffix needed) |
| Steel | | SKA16X3RB | NBR |
| Stainless Steel | 71 | SKA16X3RB71 | VIT |

OR O-ring for weld nipple

For Type: SKA, SKAR, SKA-RB



| Series | D1 | O-ring NBR Shore-Hardness approx. 90 | O-ring FKM Shore-Hardness approx. 90 |
|-----------------|--------|--|--|
| L ³⁾ | 06 | OR4.5X1.5X | OR4.5X1.5VITX |
| | 08 | OR6.5X1.5X | OR6.5X1.5VITX |
| | 10 | OR8.5X1.5X | OR8X1.5VITX |
| | 12 | OR10.5X1.5X | OR10X1.5VITX |
| | 15 | OR12.5X1.5X | OR12X2VITX |
| | 18 | OR16X2X | OR15X2VITX |
| | 22 | OR20X2X | OR20X2VITX |
| | 28 | OR26X2X | OR26X2VITX |
| | 35 | OR32X2.5X | OR32X2.5VITX |
| | 42 | OR39X2.5X | OR38X2.5VITX |
| S ⁴⁾ | 06 | OR4.5X1.5X | OR4.5X1.5VITX |
| | 08 | OR6.5X1.5X | OR6.5X1.5VITX |
| | 10 | OR8.5X1.5X | OR8X1.5VITX |
| | 12 | OR10.5X1.5X | OR10X1.5VITX |
| | 14 | OR12X2X | OR12X2VITX |
| | 16 | OR14X2X | OR13X2VITX |
| | 20 | OR17X2.5X | OR16.3X2.4VITX |
| | 25 | OR22X2.5X | OR20.3X2.4VITX |
| | 30 | OR27X2.5X | OR25.3X2.4VITX |
| | 38 | OR35X2.5X | OR33.3X2.4VITX |

³⁾L = light series; ⁴⁾S = heavy series