

POWER UNITS



20 HP 2CYL Lombardini engine unit.

Flowrate : 30ltrs per min

Max WP : 200Bar.

All sizes from 3HP to 100HP

Built to customer specification.



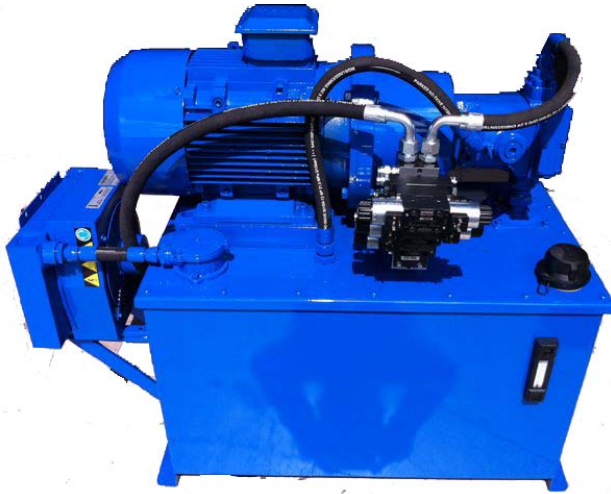
Single Phase and 3 Phase Power units

manufactured to customer specification at our workshop here in Middleton.

Sizes : .25Kw to 33Kw.

Flow rates : 1ltr to 100ltr

Pumps : Gear type and Piston type to suit all applications.



11KW POWER UNIT

PUMP : Parker Piston Pump
Variable displacement, pressure
compensated.

Airblast Oil cooler

3 STATION Solenoid operated valve
stack. 24V DC Modular Dual flow
control and Pilot operated check
valves.

150 Ltr reservoir c/w Tank
Mounted Return Line Filter.



22KW Power Unit for Testing hydraulic motors.

Parker PV080 variable
displacement piston pump.

Manual Lever valve for engaging
and disengaging motor on test.

Manually adjusted flow control.
0-180Ltr per min flow meter
0-4000PSI pressure gauge.

200ltr Reservoir c/w Return
Line filter 10 Micron.